

**DOOR SCHEDULE**

DOOR NO.	SIZE	WIDTH	HEIGHT	THICK	RATING (MIN)				FRAME				DETAILS				REMARKS					
					1 1/2	2	3	4	MAT	FIN	HEAD	JAMB	THOLD	FIN	FIN	P		3/4"	1/2"	1/4"	1/4"	
101	3'-0"	8'-0"	1-3/4"																			
102	3'-0"	8'-0"	1-3/4"																			
103	3'-0"	8'-0"	1-3/4"																			
104	3'-0"	8'-0"	1-3/4"																			
105	3'-0"	8'-0"	1-3/4"																			
106	3'-0"	8'-0"	1-3/4"																			
107	3'-0"	8'-0"	1-3/4"																			
108	3'-0"	8'-0"	1-3/4"																			
109	3'-0"	8'-0"	1-3/4"																			
110	3'-0"	8'-0"	1-3/4"																			

**WINDOW SCHEDULE**

WINDOW INDEX	TYPE	SIZE	SILL	FRAME		GLASS		REMARKS
				MAT	FIN	S/A/B/D	F	
111	TYP.	4'-0" x 5'-0"	SEE REMARKS	S/A/B/D	AL	F	1"	

**SCHEDULES**

NO.	DESCRIPTION	REMARKS
1	SEE REMARKS FOR SPECIFICATIONS	

**FINISH SCHEDULE**

ROOM NO.	ROOM NAME	FLOOR	WALLS				CEILING	REMARKS
			BASE	NORTH	SOUTH	WEST		
101	STORAGE	VCT	WFS	WFS	WFS	WFS	WFS	
102	HALL	VCT	WFS	WFS	WFS	WFS	WFS	
103	KITCHEN	VCT	WFS	WFS	WFS	WFS	WFS	
104	OPERATOR	CPT	WFS	WFS	WFS	WFS	WFS	
105	OFFICE	VCT	WFS	WFS	WFS	WFS	WFS	
106	RESTROOM	VCT	WFS	WFS	WFS	WFS	WFS	

**NOTES**

- GENERAL NOTES:
  - ALL INTERIOR DOORS SHALL BE 3'-0" x 7'-8" SOLID CORE DOORS. SEE PROJECT MANUAL SPECIFICATION.
  - ALL INTERIOR WALLS TO BE FINISHED PER PROJECT MANUAL SPECIFICATION.
  - ALL EXTERIOR WALLS AND DOORS FRAMES TO MATCH EXISTING BUILDING. CONTRACTOR TO VERIFY PRIOR TO ORDER AND INSTALLATION. SEE PROJECT MANUAL SPECIFICATION.
  - ALL EXTERIOR DOORS SHALL BE SOLID CORE. SEE IRIS EC MANUAL SPECIFICATION. CONTRACTOR TO VERIFY PRIOR TO ORDER AND INSTALLATION.
  - ALL DOOR HARDWARE TO BE INSTALLED PER PROJECT MANUAL SPECIFICATION.
  - EXTERIOR PLASTER STUCCO FINISH TO BE INSTALLED TO MATCH EXISTING PROJECT MANUAL SPECIFICATION.
  - PROVIDE CONCRETE SPUSH BOLTS AT ALL TOP OF FRAMING DISC ARGES PER PLAN.
  - NO HAZARDOUS MATERIALS WILL BE STORED AND/OR USED WITHIN THE BUILDING WHICH EXCEED THE QUANTITIES LISTED IN IBC TABLES 307.1(1) AND 307.1(2). LANDING SHALL BE < 1/2" LOWER THAN THE DOORWAY THRESHOLD. PER SECTION 1008.1.6. ALL HAZARDOUS MATERIALS SHALL BE KEPT IN CONTAINERS WITHOUT THE USE OF A KEY OR SPECIAL KNOWLEDGE OR EFFORT (SECTION 1008.1.6).

**HAZARDOUS MATERIAL STORAGE - PER TABLE 307.1(1) AND 307.1(2)**

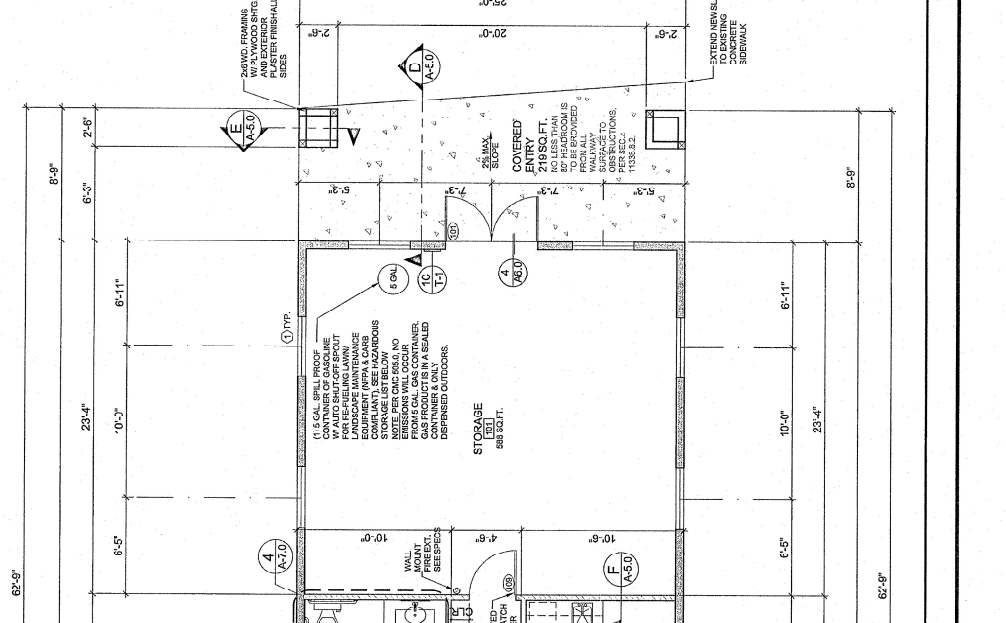
PRODUCT CLASSIFICATION	EMBALLAGE	STORAGE HEIGHT	STYRENE	QUANTITY	ASBESTOS	WASTE	WATER
1B	NON	NO	NO	0	1	0	0

**OCCUPANT LOAD PER SECTION 1004**

FUNCTION OF SPACE	AREA	OCCUPANT LOAD PER TABLE 1004.1.1	NUMBER OF OCCUPANTS
OFFICE	782 SF.	1 OCC. PER 165 S.F.	8
STORAGE	588 SF.	1 OCC. PER 500 S.F.	1

**WALL LEGEND:**

- EXTERIOR 2" MIN. STUD WALL FRAMING @ 16" O.C. WITH 1/2" GYPSUM BOARD OVER STUDS. EXTERIOR PLASTER FINISH TO MATCH EXISTING.
- INTERIOR 2" MIN. STUD WALL FRAMING @ 16" O.C. WITH 1/2" GYPSUM BOARD OVER STUDS. INTERIOR PLASTER FINISH TO MATCH EXISTING.
- ONE HOUR RATED INTERIOR 2" MIN. STUD WALL FRAMING @ 16" O.C. WITH 1/2" GYPSUM BOARD OVER STUDS. INTERIOR PLASTER FINISH TO MATCH EXISTING.
- INTERIOR 2" MIN. STUD WALL FRAMING @ 16" O.C. WITH 1/2" GYPSUM BOARD OVER STUDS. INTERIOR PLASTER FINISH TO MATCH EXISTING.



**FLOOR PLAN**

SCALE: 1/8" = 1'-0"

DATE: 12/22/10

PROJECT: SOBORA INDIAN HEALTH CLINIC STORAGE / OFFICE BUILDING

LOCATION: SAN JACINTO, CALIFORNIA 92583

DESIGNER: [Logo]

PROJECT NO.: 800-54-10

SHEET NO.: A-2.0

SCALE: 1/8" = 1'-0"